



jordan fishwick

Buxton Road New Mills High Peak



Buxton Road New Mills High Peak SK22 3JT

£259,950



The Property

Most deceptive and enjoying fine rear views, a spacious and versatile mid terraced property. Accommodation over four floors including two double bedrooms and two useful attic rooms. OFF ROAD PARKING and GARDENS. Pvc double glazing, gas central heating and comprising: Vestibule, hallway, living room, dining kitchen, lower ground floor hall, utility/games room, wc, store room, two first floor double bedrooms with storage, bathroom plus two second floor attic rooms. Viewing highly recommended.




- Over Four Floors
- Fine Rear Views
- Two Double Bedroom
- Useful Attic Rooms
- Plus Lower Ground Floor
- Private Garden
- Off Road Parking
- Spacious Dining Kitchen
- Pvc Double Glazing and Gas Central Heating

Postcode SK22 3JT

EPC Rating

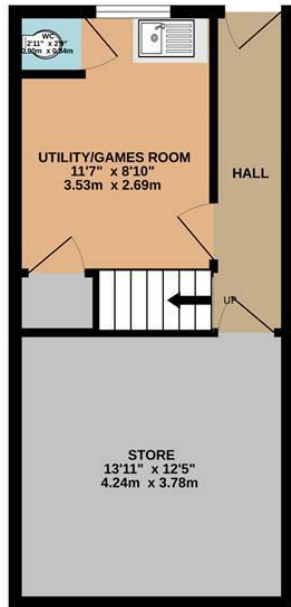
Local Authority High Peak

Council Tax A

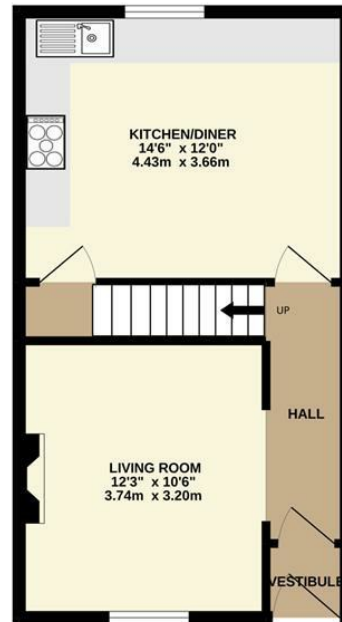
Energy Efficiency Rating		
	Current	Potential
Very energy efficient - lower running costs		
(92 plus) A		
(81-91) B		
(69-80) C		
(55-68) D		
(39-54) E		
(21-38) F		
(1-20) G		
Not energy efficient - higher running costs		
England & Wales	EU Directive 2002/91/EC 	



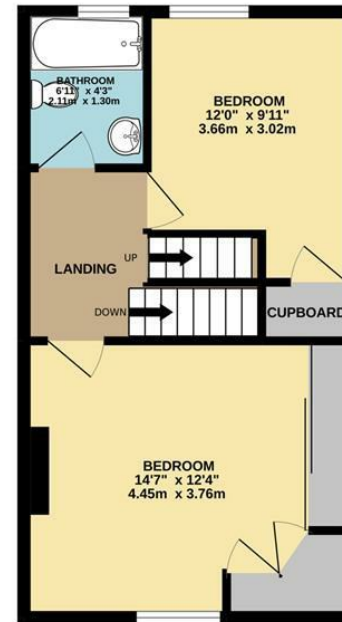
BASEMENT



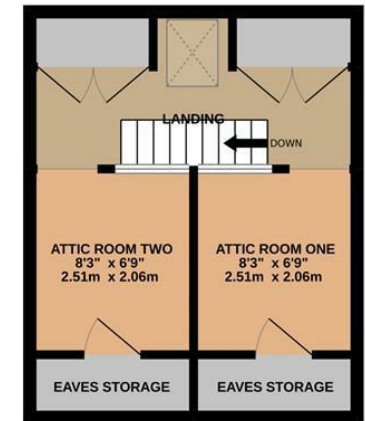
GROUND FLOOR



1ST FLOOR



2ND FLOOR



Whilst every attempt has been made to ensure the accuracy of the floorplan contained here, measurements of doors, windows, rooms and any other items are approximate and no responsibility is taken for any error, omission or mis-statement. This plan is for illustrative purposes only and should be used as such by any prospective purchaser. The services, systems and appliances shown have not been tested and no guarantee as to their operability or efficiency can be given.
 Made with Metropix ©2022



These particulars are believed to be accurate but they are not guaranteed and do not form a contract. Neither Jordan Fishwick nor the vendor or lessor accept any responsibility in respect of these particulars, which are not intended to be statements or representations of fact and any intending purchaser or lessee must satisfy himself by inspection or otherwise as to the correctness of each of the statements contained in these particulars. Any floorplans on this brochure are for illustrative purposes only and are not necessarily to scale.

Offices at: Chorlton, Didsbury, Disley, Hale, Glossop, Macclesfield, Manchester Deansgate, Manchester Whitworth Street, New Mills, Sale, Wilmslow and Withington

14 Market Street, Disley, Cheshire, SK12 2AA

01663 76 78 78

disley@jordanfishwick.co.uk

www.jordanfishwick.co.uk